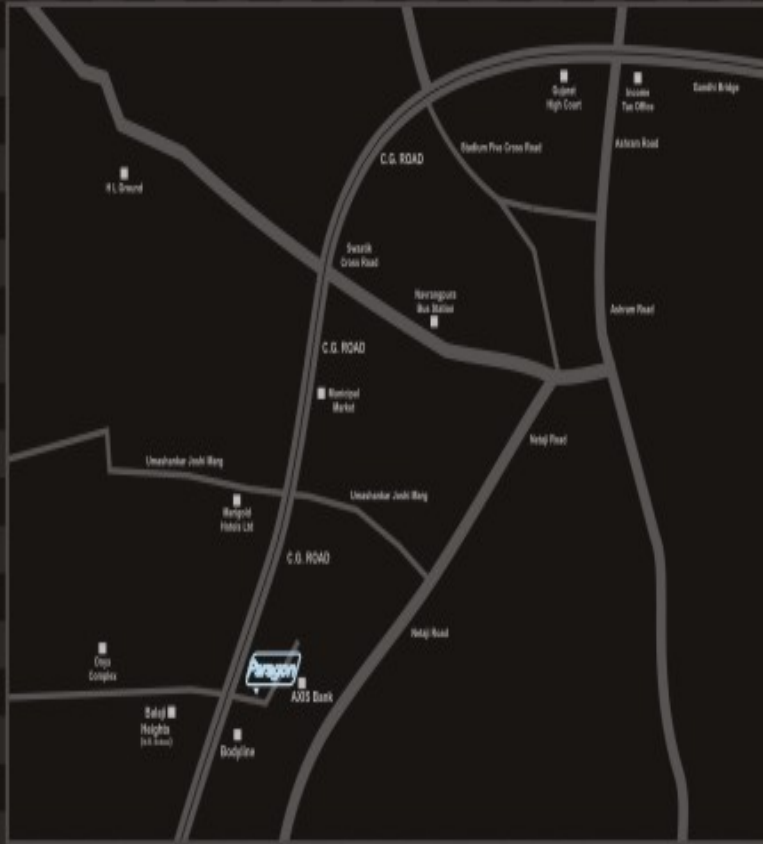




Your new
core
competency



SHREE BALAJI PARAGON

Near Rock Regency Hotel, Near Circle P, C.G. Road

Call: 92278 88252, 92278 88200

SHREE BALAJI GROUP

Shree Balaji Mall, 4th floor, Nr. D Mart, Visat, Gandhinagar Highway, Motera, Ahmedabad Ph : 079 - 27570667, 27570999

Email: shreebalaji.manav@gmail.com | Web: www.shreebalajiconstruction.com

ISO 9001 : 2008 • ISO 14001 : 2004 • OHSAS 18001 : 2007 Certified Company



Premium Showrooms and Offices



Introduction

Success is a habit, not a momentary burst of inspiration and execution. That habit needs a home. A place where elegant spaces inspire to transcend one's potential and excel. Balaji Paragon is that very destination, a blend of state-of-the-art design, power spaces, unmistakable style and host of facilities to match any modern commercial complex.

Balaji Paragon exemplifies a modern corporate home. Besides adding a status upgradation, the complex also offers ample parking space, follows stringent fire safety and security norms and provides the most significant advantage to any corporate in strategic location. Setup on the bustling C.G. Road, Balaji Agora ensures you're no more than 20 minutes away from any vital touch point in Ahmedabad.

So if your corporation is ambitious enough to look to add a new hat rather than a feather to add on the old one, Balaji Paragon is the place to call home.



Premium Showrooms and Offices

Just a heartbeat away



Balaji Paragon is nestled in the prized commercial capital of Ahmedabad in C.G.Road. It's not just the presence of major multinational and regional corporate powerhouses that makes this such a prime location but the convenience of travel. The airport as well as the railway station is just a 20 minute drive away. A host of premium hotels and restaurants are not too far either.

After all, if living and breathing success is all you endeavor to do, it's essential to be among equals.

Basement

100'-0" WIDE ROAD

-01
STORE
36'9" X 61'0"
3536.21 SQ.FT

15'-0" WIDE DRIVE WAY



UP
STAIRS



15'-0" WIDE DRIVE WAY

5'-0" WIDE PASSAGE
UP

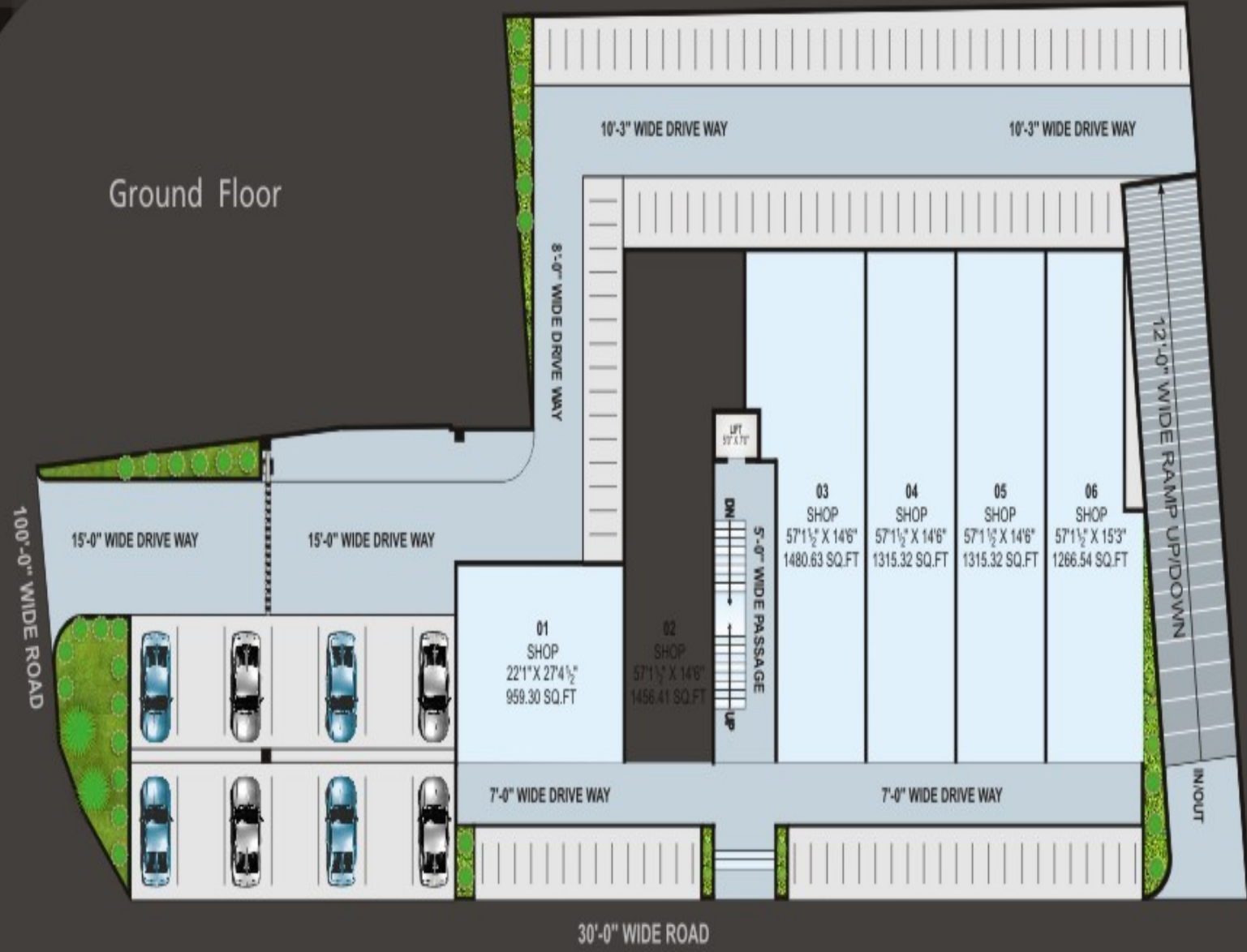


15'-0" WIDE DRIVE WAY

IN/OUT
12'-0" WIDE RAMP UP/DOWN

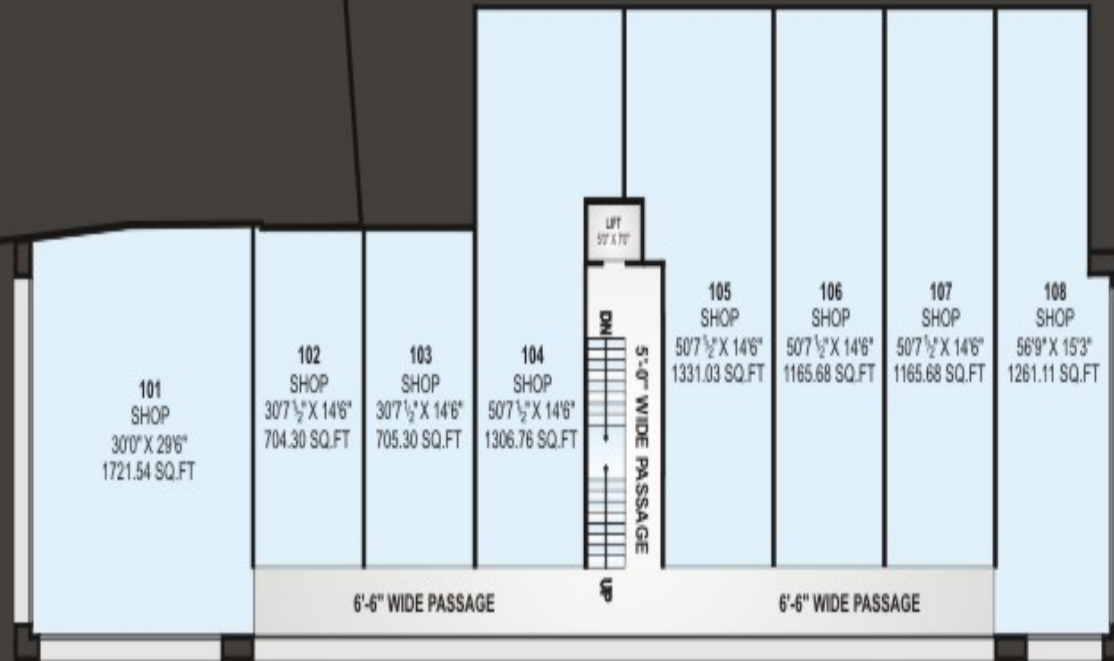
30'-0" WIDE ROAD

Ground Floor



First Floor

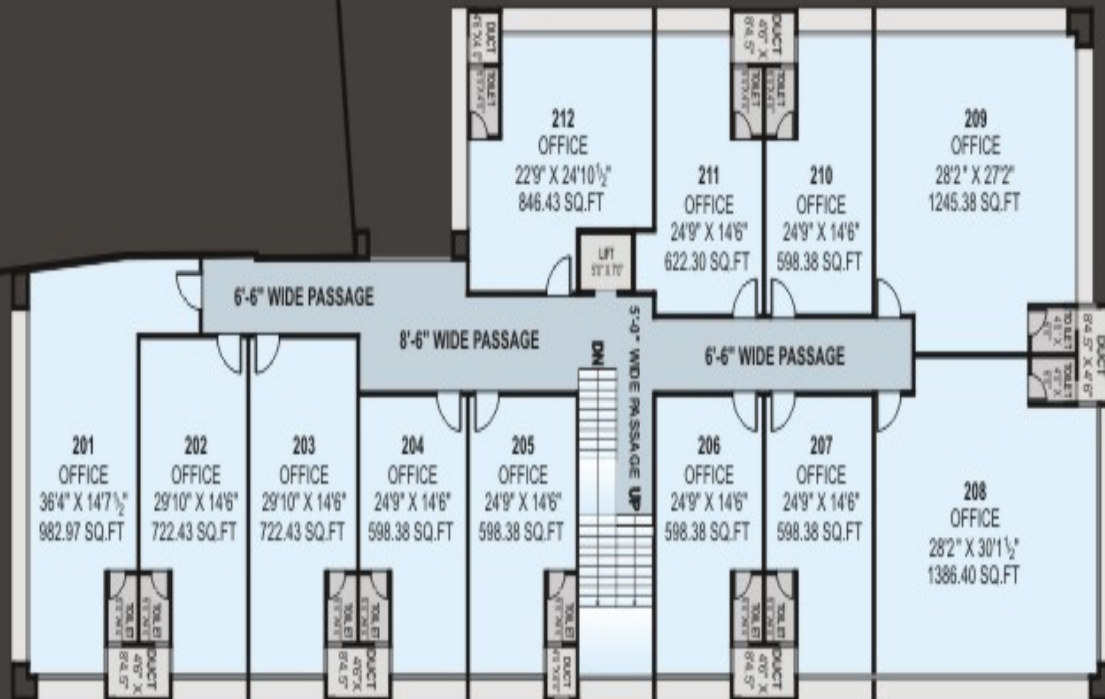
100'-0" WIDE ROAD



30'-0" WIDE ROAD

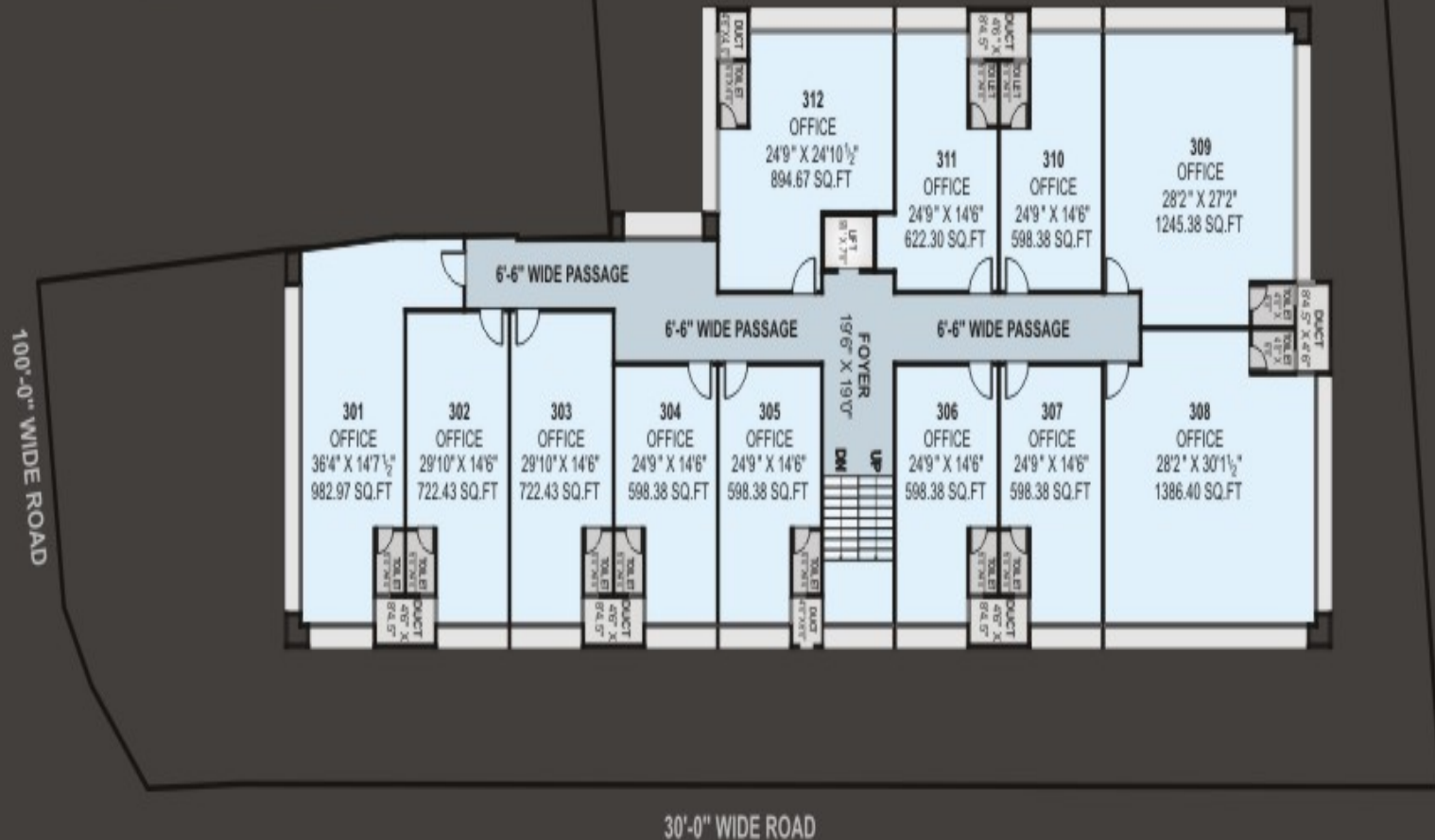
2nd Floor

100'-0" WIDE ROAD



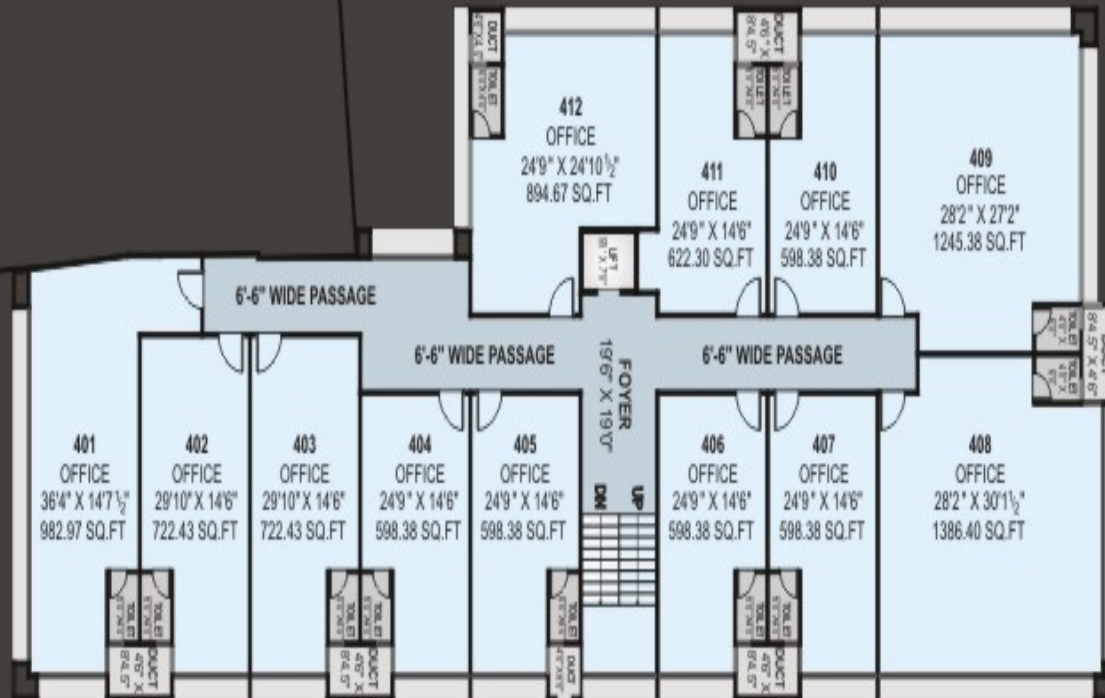
30'-0" WIDE ROAD

Typical floor plan (3rd)



Typical floor plan (4th)

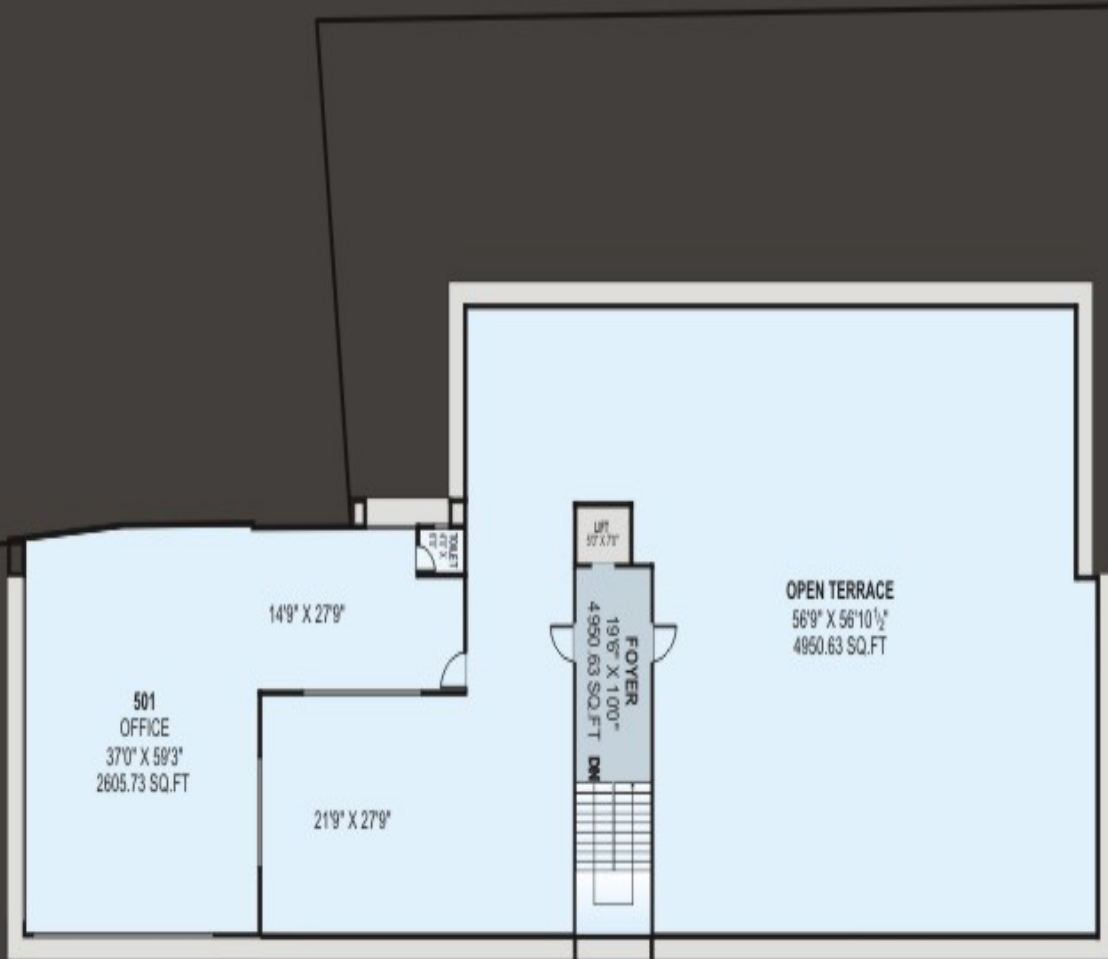
100'-0" WIDE ROAD



30'-0" WIDE ROAD

5th Floor

100'-0" WIDE ROAD



30'-0" WIDE ROAD

SHREE BALAJ PARAGON - Near Rock Regency Hotel, Near Circle P, C.G. Road
PLOT AREA = 15,804.00 SQ.FT.

LOWER FLOOR	
SHOP NO.	AREA
-1	3536.21
TOTAL	3536.21

GROUND FLOOR	
SHOP NO.	AREA
1	959.30
2	1456.41
3	1480.63
4	1315.32
5	1315.32
6	1266.54
TOTAL	7793.52

FIRST FLOOR	
SHOP NO.	AREA
101	1721.54
102	704.94
103	705.30
104	1306.76
105	1331.03
106	1165.68
107	1165.68
108	1261.11
TOTAL	9362.05

SECOND FLOOR	
OFFICE NO.	AREA
201	982.97
202	722.43
203	722.43
204	598.38
205	598.38
206	598.38
207	598.38
208	1386.40
209	1245.38
210	598.38
211	622.30
212	894.67
TOTAL	9520.27

THIRD FLOOR	
OFFICE NO.	AREA
301	982.97
302	722.43
303	722.43
304	598.38
305	598.38
306	598.38
307	598.38
308	1386.40
309	1245.38
310	598.38
311	622.30
312	894.67
TOTAL	9568.50

FOURTH FLOOR	
OFFICE NO.	AREA
401	982.97
402	722.43
403	722.43
404	598.38
405	598.38
406	598.38
407	598.38
408	1386.40
409	1245.38
410	598.38
411	622.30
412	894.67
TOTAL	9568.50

FIFTH FLOOR	
OFFICE NO.	AREA
501	2685.73
TOTAL	2685.73

TOTAL AREA	
FLOOR	AREA
BASEMENT	3536.21
GROUND FLOOR	7793.52
1st FLOOR	9362.05
2nd FLOOR	9520.27
3rd FLOOR	9568.50
4th FLOOR	9568.50
5th FLOOR	2685.73
TOTAL	51354.76



SHREE BALAJI
GROUP

Not just buildings, we build lives.

The logic is simple. Our inner world is largely influenced by our outer world. The more inspiring the surroundings, the greater our life will be.

We at Balaji Group, keep this dictum in mind while conceiving any project – be it a residential scheme or a commercial project.

The result is evident in numerous lives uplifted!